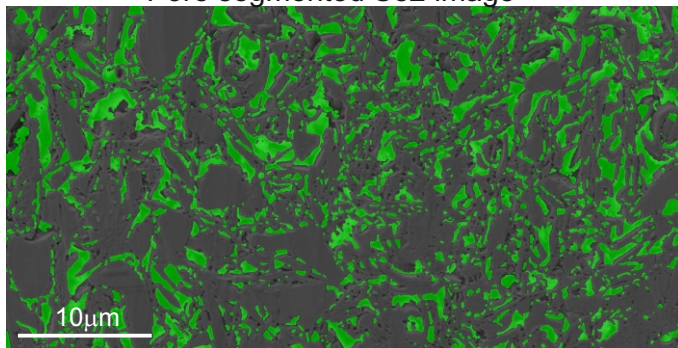
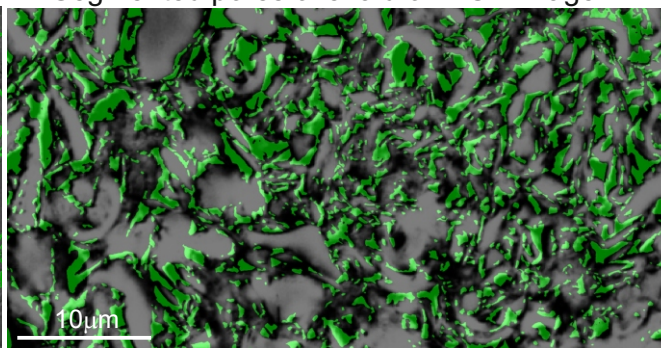


**SN-2 (U1480E-1H-4W-73-75, depth-5.1mbsf)**

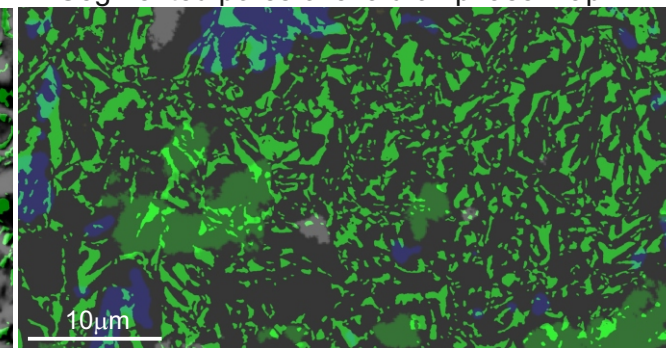
Pore segmented Se2 image



Segmented pores overlaid on BSE image

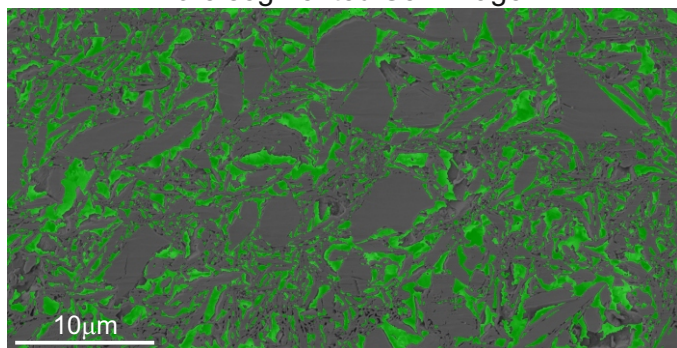


Segmented pores overlaid on phase map

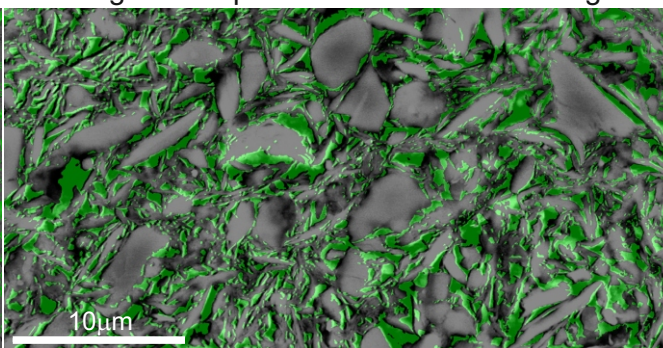


**SN-3 (U1480E-2H-1W-127-129, depth 9,18mbsf)**

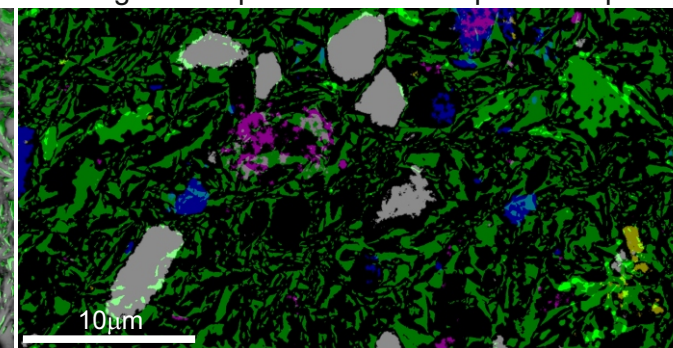
Pore segmented Se2 image



Segmented pores overlaid on BSE image

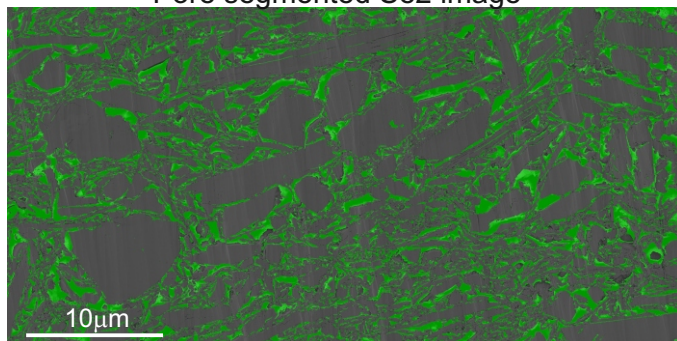


Segmented pores overlaid on phase map

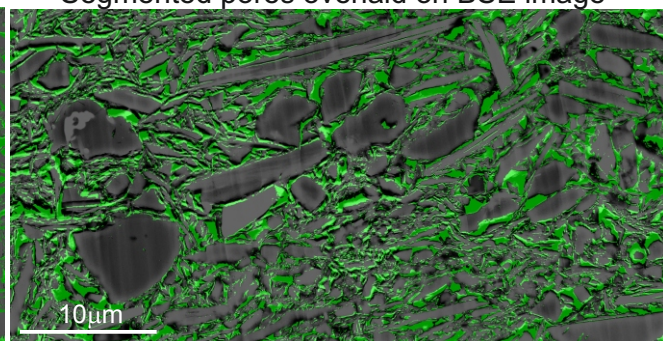


**SN-6 (U1480E-4H-1W-129-131, depth 28mbsf)**

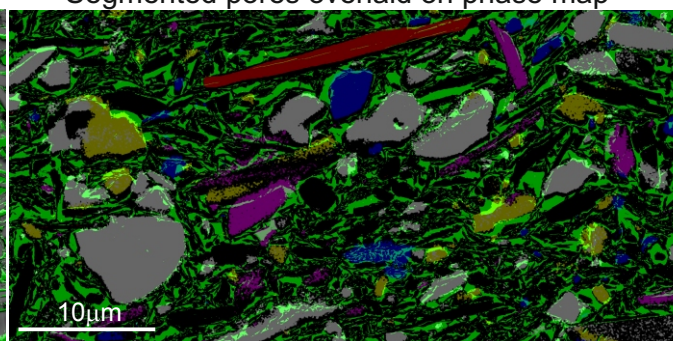
Pore segmented Se2 image



Segmented pores overlaid on BSE image



Segmented pores overlaid on phase map



Supplementary data-4: SE2, BSE image and phase maps of the samples SN-2; SN-3 and SN-6 respectively. Green-colored segmented pores overlaid on BSE mosaic and phase maps. In the phase maps, grey= Quartz; yellow=feldspar; Red=mica; pink=pyrite; blue=calcite.